

# 2025 Annual REPORT

## HIGHLIGHTS

In 2025, strategic partnerships strengthened ASPHO's impact across advocacy, workforce development, pediatric research, and general public awareness of advancements and challenges in patient care. These collaborations also helped the Society respond to changes in policy, funding, and the practice environment while supporting members with critical updates and relevant educational and career development programming. Additionally, a comprehensive educational needs analysis was conducted to better understand evolving member needs and inform ASPHO's upcoming strategic planning process.

### Mission

To support and empower the pediatric hematology and oncology medical and scientific community.

### Vision

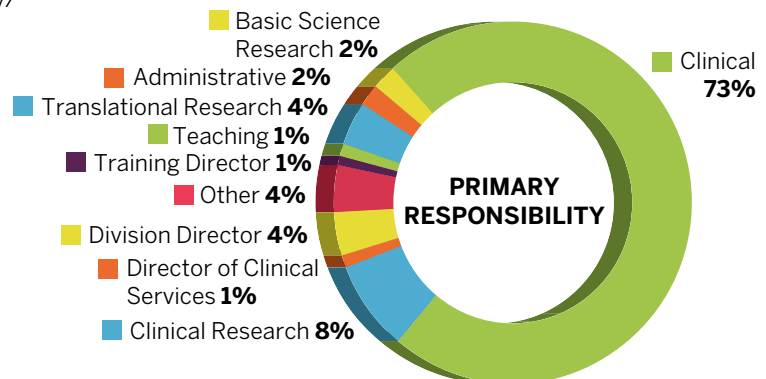
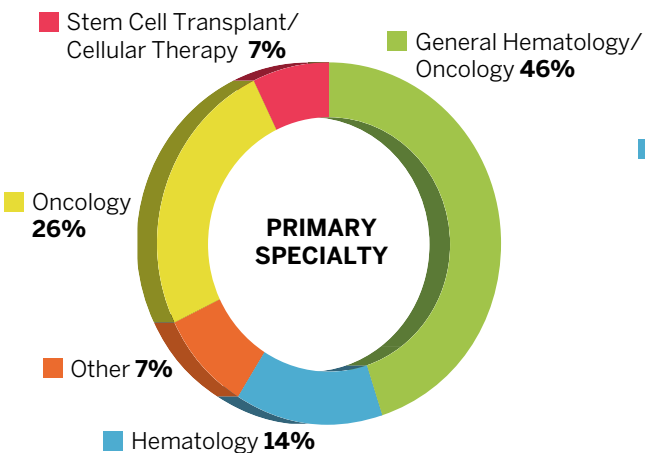
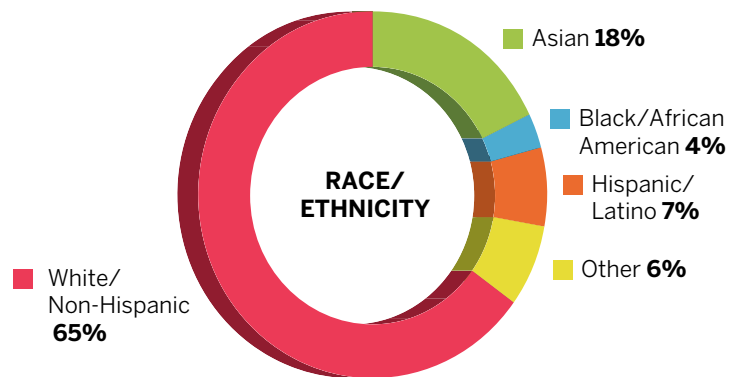
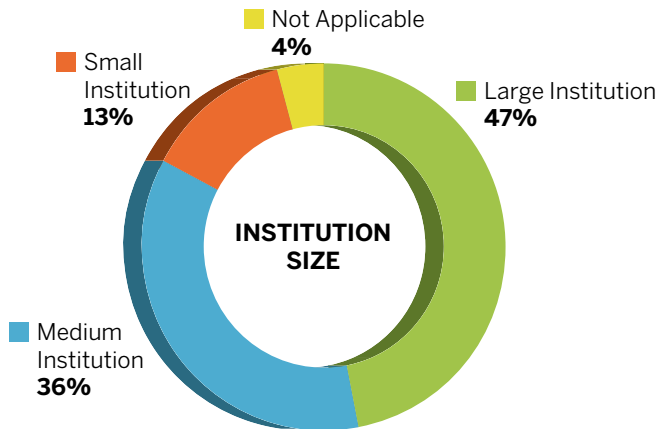
Improved health and a better future for children, adolescents, and young adults with cancer and blood disorders.

### Our Core Values

- Collaboration
- Compassion
- Diversity and Inclusion
- Health Equity
- Innovation



## MEMBER SNAPSHOT\*



\*Data based on responses from 80-95% of membership

## DEI in Action

ASPHO's core values of diversity and inclusion and health equity were embedded as a Board-developed charge into the Member Engagement Committee, as 'Review and recommend DEI activities that support membership and enhance the member experience,' to ensure ongoing support of membership.

Highlights included appointing volunteers representative of the membership; presenting DEI-related programs, including a webinar titled Achieving Equitable Access to BMT and Gene Therapy for Patients with Hemoglobinopathies; and publishing articles, including The Importance of Language Equity in Clinical Trials, The Importance of DEI in PHO, The Impact of Inadequate Diversity and Inclusion in PHO, in the member eNews; maintaining the DEI Special Interest Group online member community and onsite engagement opportunity at the annual ASPHO Conference.

# STRATEGIC PLAN PILLARS AND 2025 HIGHLIGHTS



## IMPACT/ADVOCACY

*Strengthen the impact on pediatric hematology/oncology care through advocacy and partnerships.*

- Informed members and encouraged advocacy participation through the quarterly member Advocacy Brief, alerts in Your Weekly Update emails, A Call to Action and Advocacy Resources for Members articles in the member eNews, and Leadership Updates
- Collaborated with the Alliance for Childhood Cancer (Alliance), including attending in-person Action Days 2025
- Advocated for increased funding for the Childhood Cancer Survivorship, Treatment, Access, Research (STAR) Act and the Childhood Cancer Data Initiative (CCDI) and increased funding for the National Institutes of Health (NIH) and the National Cancer Initiative (NCI)
- Supported efforts in sickle cell disease (SCD) with continued engagement with the Sickle Cell Disease Coalition. Also worked with the American Society of Hematology (ASH) in supporting and advocating for the Sickle Cell Disease Comprehensive Care Act
- Continued to support multiple pieces of legislation including the Accelerating Kids' Access to Care Act, the Pediatric Cancer Drug Supply Act, the Innovation in Pediatric Drugs Act, and the Gabriella Miller Kids First Research Act 2.0
- Signed onto 15 letters supporting relevant legislation and funding priorities in conjunction with our ongoing work with the Alliance, ASH, and the American Academy of Pediatrics (AAP)
- Celebrated 8th year in partnership with Northwestern Mutual to award progressive work in childhood cancer survivorship, and 11th year in partnership with the American Academy of Pediatrics Section on Hematology/ Oncology in a Joint Policy Review Effort
- Expanded advocacy efforts by joining more than 90 organizations in support of full research funding for National Institutes of Health (NIH)
- Contributed member-authored article, Every Child with Cancer Deserves a Lifetime, for general public awareness in USA Today supplement, with an estimated 1.5 million print and online readers.



## Community/Professional Development

*Deliver opportunities for career development and community engagement.*

- Established a new Virtual Career Fair connecting members to hiring healthcare institutions
- Offered our 5th year of the Individualized Career Development Program, a mentoring program for mid-career members, which focuses on assisting this career stage in navigating the opportunities and challenges that arise in this career stage
- Continued to offer the Resident and Medical Student Meetup at conference
- Hosted a focused webinar for late careerists to highlight career transitions in the late career stage
- Supported early careerists with career guidance specific to their needs through our established early career mentoring programming, town hall discussion and focused conference programming
- Enhanced member community features allowing improved access to member discussions and Society events
- Continued providing year-round support and guidance to 16 special interest member communities that foster knowledge sharing, collaboration, and networking during the annual conference and year-round online
- Continued to support our fellowship program directors and division directors through our member community dialogue, town halls and focused annual conference programs for those leaders
- Developed social media ambassador pilot program to increase online community.



## Practice/Workforce

*Assess and communicate trends and innovations in our workforce and practice models.*

- Sustained strategic engagement with external organizations, including the Council of Pediatric Subspecialties (CoPS) and the American Society of Hematology (ASH), to advance pediatric subspecialty workforce and recruitment pipeline discussions
- Developed Getting Residents Interested in PHO resource
- Host a member community for Advanced Practice Providers for year-round engagement, onsite participation at the ASPHO Conference including awarding of an APP Travel Stipend, and opportunity to participate in the call for ASPHO Webinars
- Launched targeted, grass-roots outreach to osteopathic medical schools to elevate awareness of the PHO subspecialty
- Advanced dialogue on workforce, care delivery, AI in clinical practice, and funding to better define the subspecialty's current landscape
- Maintained working relationships with Division Directors and Program Directors, through year-round communities, meetings, the annual Division Directors Academy and other opportunities.

# STRATEGIC PLAN PILLARS AND 2025 HIGHLIGHTS



## EDUCATION/KNOWLEDGE

*Provide a comprehensive portfolio to address the diverse educational needs of learners.*

- Incorporated recommendations from the Conference Task Force regarding networking/engagement, well-being, and education enhancements such as accepting a higher percentage of workshop proposals, eliminating the 90-minute sessions, and adding additional networking times and breaks
- Partnered with the Children's Oncology Group (COG) to deliver an educational session on Novel Therapies for Acute Lymphoblastic Leukemia, and the Pediatric Transplantation and Cellular Therapy Consortium (PTCTC) to deliver a joint session on Down syndrome - Immune Dysregulation, Hyperinflammation, and Special Considerations for HCT and CAR-T, as well as educational sessions as part of the PTCTC Annual Educational Meeting
- Offered additional educational resources, including six webinars, bimonthly case quizzes, and 35 Review Course on-demand lectures and corresponding self-assessment questions with the 2025 KARE Toolkit
- Partnered with SIOP on new webinar series focusing on global PHO
- Collaborated with APHON, providing complimentary access to the live and on demand webinar, The Evolution of Pediatric Hematology/Oncology APP Practice Demands to Meet Organizational Needs with Changing ACGME Requirements, developed by the ASPHO Advanced Practice Provider Special Interest Group
- Held our 4th successful hybrid ASPHO Conference, offering up to 42.25 *AMA PRA Category 1 Credits™* and 10 Maintenance of Certification (MOC) Part 2 points. Highlights included the Keynote Presentation by Hayley Arceneaux, Presidential Symposium on Innovation in PHO Practice Addressing Workforce Challenges, presentation of the 2025 Frank A. Oski Memorial Lectureship by Ayesha Zia, George R. Buchanan Lectureship by James Feusner, Distinguished Career Award honoring William Carroll, and presentations led by luminary speakers Mignon Loh and Denise Adams.

### ASPHO 2025 Educational Programs featured:

- 225 thought leaders
- 120 CME credit hours offered
- 2250 total attendees

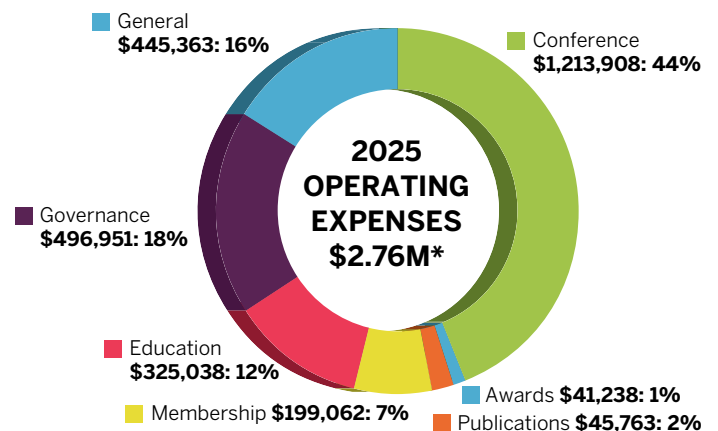
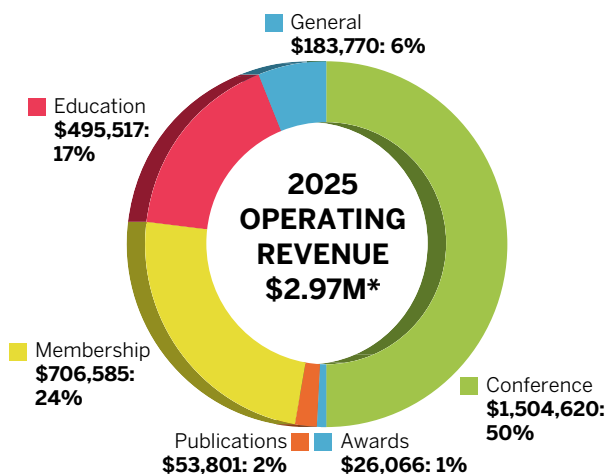


## DISCOVERY/RESEARCH

*Promote research and innovation to enhance understanding of disease processes and improve patient outcomes and care delivery.*

- Published 436 abstracts for the 2025 ASPHO Conference in *Pediatric Blood & Cancer* to share the latest scientific discoveries
- Featured six late-breaking abstracts presented during the conference
- Featured 412 poster presentations and extended viewing opportunities for 20 highly rated posters throughout the 2025 ASPHO Conference allowing authors to present their work and encourage discussion
- Announced partnership with Hyundai Hope on Wheels to sponsor ASPHO's research recognition programs for three years including funding for the Frank A. Oski Memorial Lectureship Award and Early Career Researcher Travel Awards.

# FINANCIALS



\*Preliminary FY25 financial information. The Society's reserves of \$4,267,297 at year's end are above the recommended benchmarked range for healthcare associations and are sufficient to support 18.2 months of operating expenses.

# ASPHO BOARD OF TRUSTEES



**President**

**Maria C. Velez, MD FAAP**  
Manning Family Children's  
New Orleans



**Immediate Past President**

**Jeffrey Hord, MD**  
Akron Children's Hospital



**Vice President**

**Daniel Wechsler, MD PhD**  
Children's Healthcare of Atlanta/  
Emory University



**Treasurer**

**Michelle Hudspeth, MD**  
Medical University of  
South Carolina



**Trustee-at-Large**

**Sarah Alexander, MD**  
BC Children's Hospital



**Trustee-at-Large**

**Mary-Jane Stabo Hogan, MD MPH FAAP**  
Yale School of Medicine



**Trustee-at-Large**

**Michael Jeng, MD**  
Stanford University  
School of Medicine



**Trustee-at-Large**

**Rishi Lulla, MD MS**  
Brown University Health/  
Hasbro Children's



**Trustee-at-Large**

**Amir Mian, MD MS MBA**  
Children's Blood and Cancer Center/  
Dell Children's Medical Center



**Trustee-at-Large**

**Richard Tower, MD MS**  
Medical College of Wisconsin

