



The Power of Partnership

Engagement opportunities to reach leaders
in pediatric hematology/oncology

Reach Leaders in Pediatric Hematology/Oncology



The American Society of Pediatric Hematology/Oncology (ASPHO) is a multidisciplinary organization of more than 2,000 members who are dedicated to promoting the optimal care of children, adolescents, and young adults with blood disorders and cancer by advancing research, education, treatment, and professional practice.

ASPHO members treat virtually all children, adolescents, and young adults in this country with cancer, bleeding and clotting disorders, thrombosis, sickle cell disease, and other hematologic abnormalities. Almost 90% of members hold American Board of Pediatrics subspecialty certification in hematology/oncology. More than 85% of physicians in U.S. pediatric hematology/oncology fellowship programs belong to the Society and most attend the ASPHO Conference, the flagship meeting for the subspecialty.

ASPHO provides several ways to reach this important audience, including

- exhibiting and supporting the annual ASPHO Conference
- participating in the Industry Relations Council
- supporting various programs and initiatives throughout the year.

Through your participation you will

- **support** research collaborations that can lead to optimal treatments for children, adolescents, and young adults with blood disorders and cancer
- **connect** with senior thought leaders, renowned experts, and dedicated mentors
- **promote** the advancement of emerging leaders in pediatric hematology/oncology research
- **contribute** your organization's expertise to ongoing patient care practices.

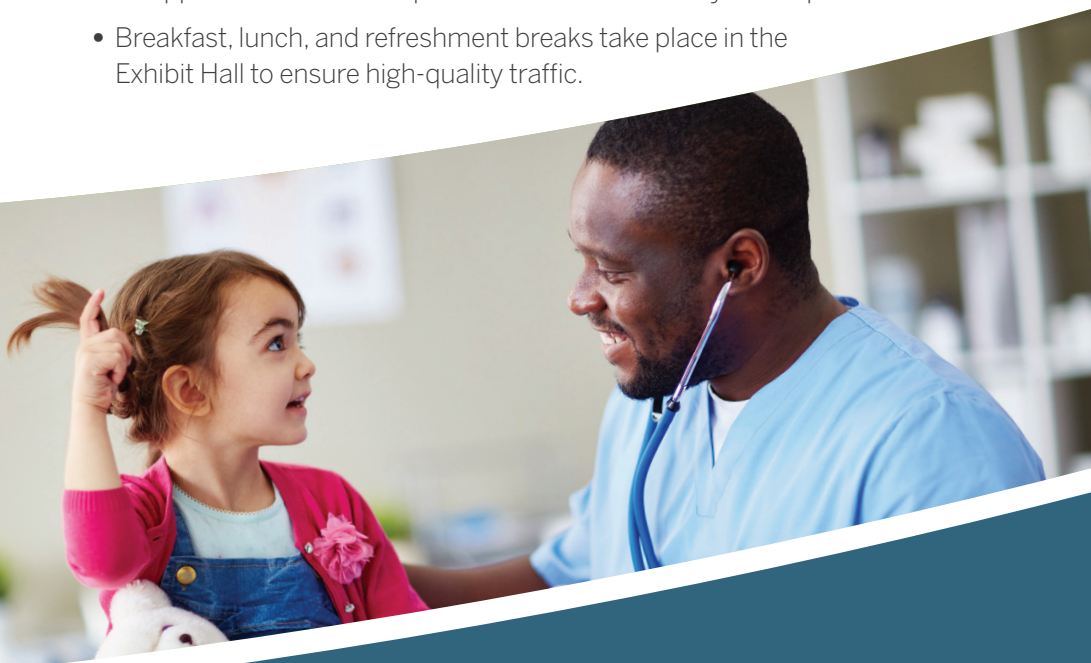
Improve the care of children, adolescents, and young adults by supporting those who care for them.

ASPHO Conference

Showcase your organization and engage ASPHO's membership by participating in the annual conference held in the spring. You will interact with more than 1,100 thought leaders representing the pediatric hematology/oncology field.

ASPHO goes the extra mile to support your presence in a variety of ways:

- The Education Theater provides an innovative forum where both industry- and association-driven content can be delivered.
- The Opening Reception kicks off Exhibit Hall activities to increase attendees' awareness of your organization's presence at the conference.
- Poster viewing is available throughout the Exhibit Hall.
- The popular Passport Program encourages physicians to visit your booth and learn about your organization.
- Customized sponsorship packages allow your organization to demonstrate its involvement in ASPHO.
- Unopposed exhibit hours provide maximum visibility and exposure.
- Breakfast, lunch, and refreshment breaks take place in the Exhibit Hall to ensure high-quality traffic.





Annual Support

Industry Relations Council

Membership in ASPHO's Industry Relations Council (IRC) is open to organizations that support the goals and mission of ASPHO. The IRC program features tiered participation for companies of all sizes to enjoy benefits that enhance engagement with ASPHO. The IRC offers recognition throughout the year and collaboration opportunities for improving patient care.

The IRC

- builds positive relationships and fosters dialogue with ASPHO senior leadership
- allows greater understanding of mutual areas of interest to foster a stronger relationship between ASPHO and IRC members
- furthers programs that benefit patients and their families.

To view associated benefits and current participants, visit www.aspho.org/support/industry-relations-council.

Customized Support Packages

ASPHO listens to your needs and helps you achieve your company's goals through customized packages for recognition throughout the year.

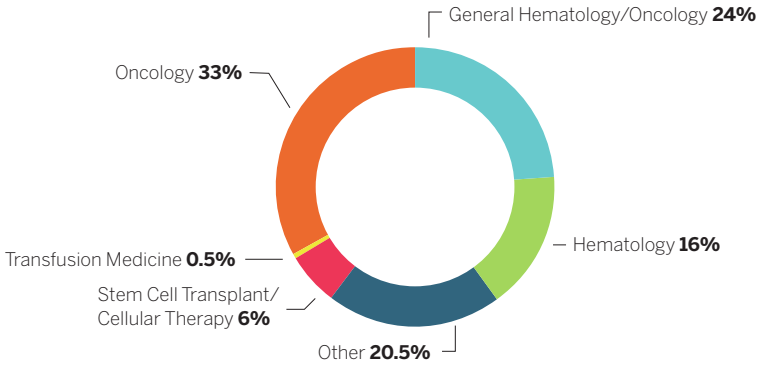
Other support options include

- webinar sponsorship
- advertising in eNews, on the ASPHO website, in the Career Center, or in sponsorship packages
- commercially supported educational symposia.

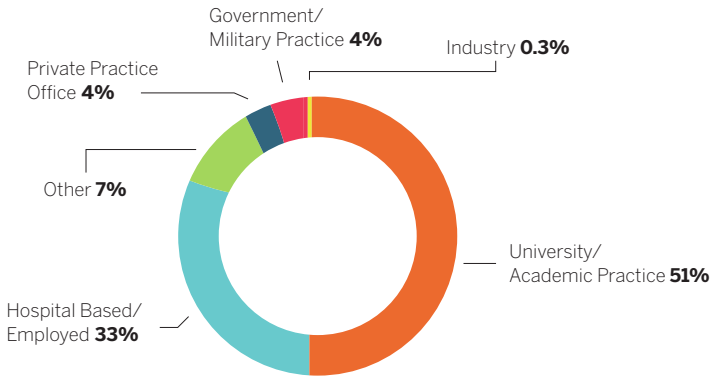
To discuss these opportunities or receive additional information, please contact Rob Frey, Director, Professional Relations & Development, at 847.375.6470 or rpfrey@aspho.org.

Member Demographics

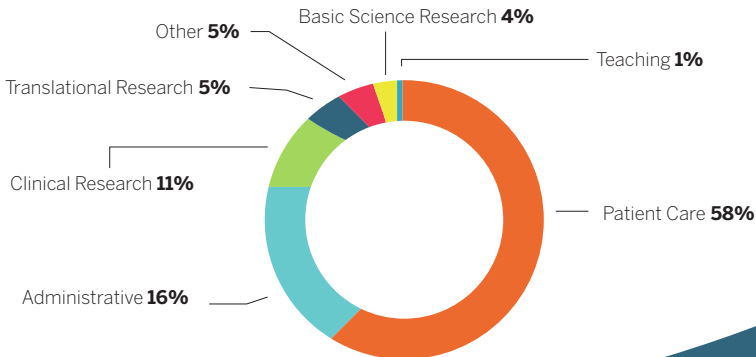
Primary Specialty



Work Setting

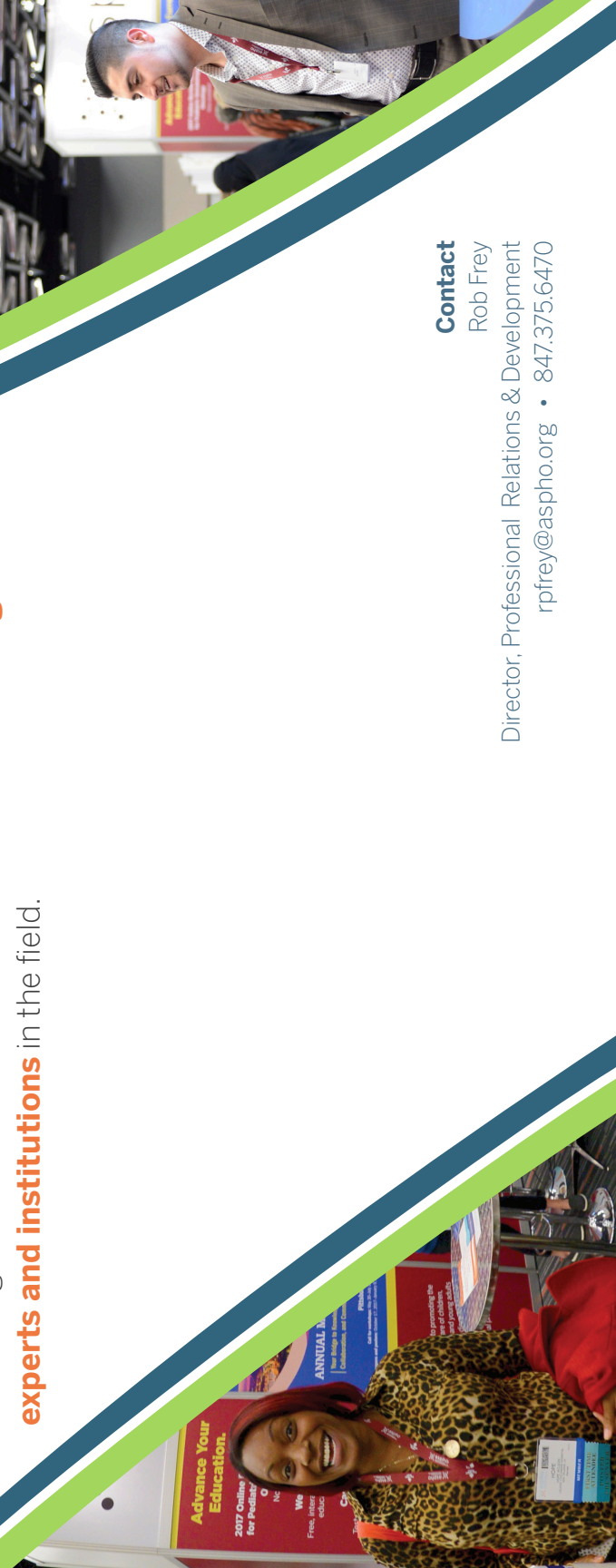


Primary Responsibility



Attend the ASPHO Conference

to network with **more than 1,100 professionals** in pediatric hematology/oncology. **Gain insight** into the latest practices and educational programs, **review poster presentations** on exciting trials and research data, and **visit with leading experts and institutions** in the field.



Contact
Rob Frey
Director, Professional Relations & Development
rpfrey@aspho.org • 847.375.6470