

2021

APRIL 20-23, 2021

# ASPHO

Virtual Conference

EXHIBITOR PROSPECTUS



**The place for discovery and research**

Meet today's—and tomorrow's—innovators and experts leading pediatric hematology/oncology care.



aspho

The American Society of  
Pediatric Hematology/Oncology


## Engage with leaders and innovators at the 2021 ASPHO Conference.

Increase your impact in the pediatric hematology/oncology field at #ASPHO2021!

We invite you to the **2021 ASPHO Virtual Conference**, April 20–23, 2021, in picturesque Portland, OR, to meet the experts advancing the pediatric hematology/oncology field. Connect with more than 1,100 physicians dedicated to improving treatment for children, adolescents, and young adults with cancer, bleeding and clotting disorders, sickle cell disease, and other hematologic/oncology conditions. Showcase your company and spark innovative collaborations that improve care for young patients.

Build relationships with today's—and tomorrow's—leaders and innovators in pediatric hematology/oncology. Physicians, including the specialty's largest gathering of fellows in training, as well as scientists, administrators, and allied healthcare providers come to the ASPHO Conference to receive the vital education and research presented at the meeting.

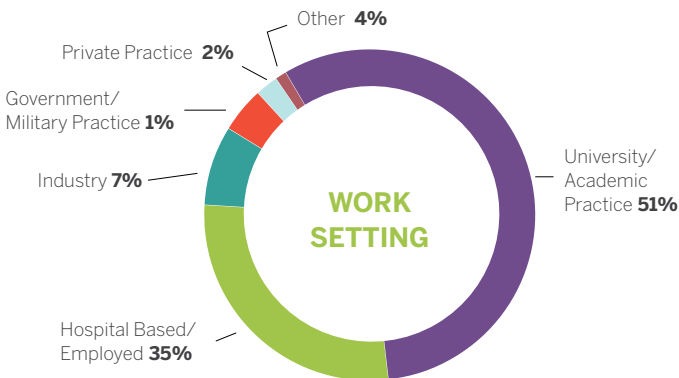
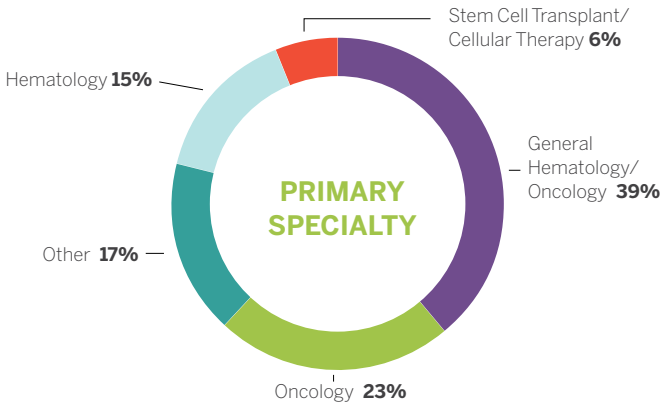
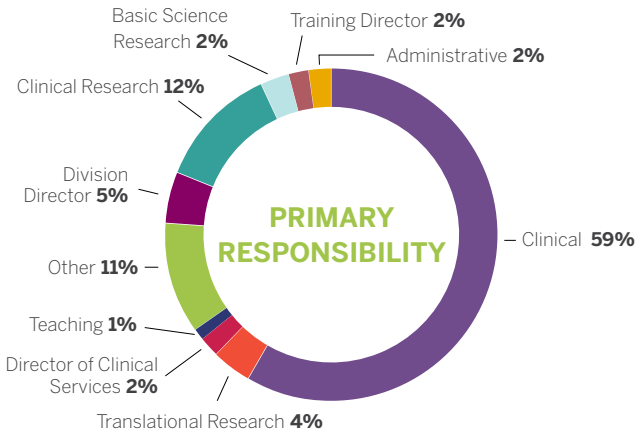
Partner with ASPHO, the leading voice representing subspecialists, to connect with thought leaders at the ASPHO Conference, the field's most influential meeting for education and networking.



**ASPHO has become the meeting—nationally and internationally—for pediatric hematologists/oncologists. As the only conference focusing entirely on these pediatric populations, it brings together physicians to share knowledge and learn from recognized experts. It also provides an exceptional setting to meet one-on-one with our industry partners. There is no other setting in which we have this amazing opportunity.”**

ZoAnn Dreyer, MD, Chair, Development Committee

# Attendee Demographics



# Why Exhibit?

Effectively connect with decision makers in the field.



**Reach** the primary market for pediatric hematology/oncology.



**Advance** research collaborations that lead to new developments in care.



**Gain** maximum visibility and exposure with unopposed exhibit hours and symposia.



**Network** during the Opening Reception and enjoy lunch and refreshment breaks in the Exhibit Hall.

## 20% OF ATTENDEES

are fellows in training.

Meet future decision makers at #ASPHO2021!

**EXHIBIT SPACE** for the 2020 ASPHO Conference sold out. Lock in your booth today and engage with ASPHO!

*(Early bird rates available)*

# Exhibit Schedule

## THURSDAY, APRIL 22

8 am–4 pm ..... Exhibit Setup and Registration  
6–7:30 pm ..... Opening Reception with Exhibits and Posters

## FRIDAY, APRIL 23

7 am–2 pm ..... Exhibits and Posters  
7–8:30 am ..... Breakfast in Exhibit Hall  
10:45–11:45 am ..... Break in Exhibit Hall  
12:30–2 pm ..... Lunch in Exhibit Hall  
1:45 pm ..... Passport Program Winners Announced in Exhibit Hall  
2–5 pm ..... Exhibit Teardown

*Schedule is subject to change. Visit [aspho.org](http://aspho.org) for updates.*

**SAVE THE DATE!**

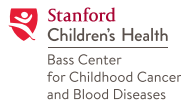
**2022 ASPHO Conference**

**May 4 - 7, 2022 • David L. Lawrence Convention Center • Pittsburgh, PA**

# Commercial Support

ASPHO offers your organization many opportunities to gain exposure at the conference and throughout the year. Please visit [aspho.org/comsupport](http://aspho.org/comsupport) for an overview of options.

**ASPHO thanks our key sponsors.**



## We invite you to join the ASPHO Virtual Conference!

A member survey ranked ASPHO as the **#1 source** for pediatric hematology/oncology education. Members attend the conference to learn about the diagnosis and treatment of patients as well as research advancements.



The American Society of Pediatric Hematology/Oncology  
8735 W. Higgins Road, Suite 300  
Chicago, IL 60631-2738

**Exhibit and sponsor at the 2021 ASPHO Conference!**  
**The place for discovery and research**

For more information, contact Michele Gallas at [mgallas@aspho.org](mailto:mgallas@aspho.org) or [info@aspho.org](mailto:info@aspho.org).