

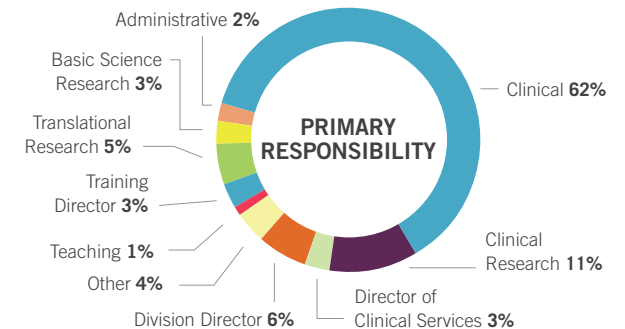
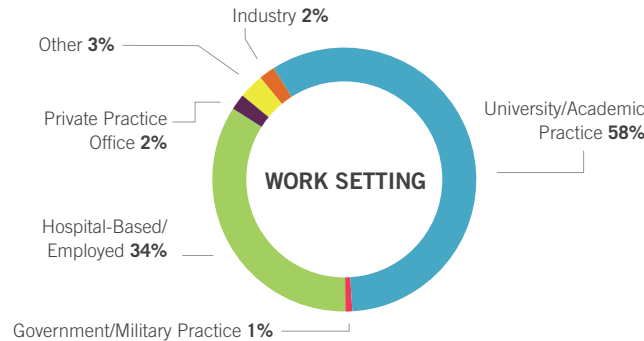
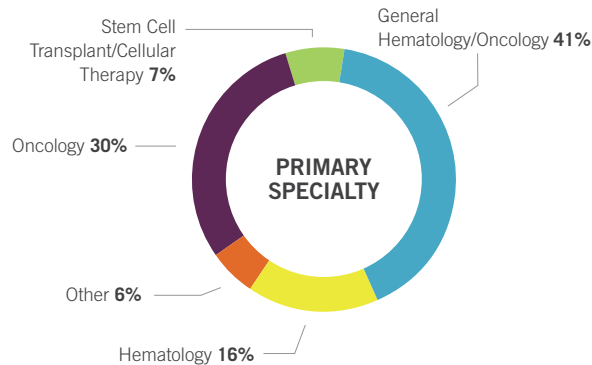
# 2018 ASPHO ANNUAL REPORT

In 2018, ASPHO began implementing the Society's new [strategic plan](#), which was developed to fulfill the core purpose of serving members in their quest to improve the health and well-being of children, adolescents, and young adults with blood disorders and cancer and to align with the Society's core values of compassion, innovation, collegiality, professional development, and quality.



## Society Snapshot

Membership continued to thrive, with 2,025 members at year's end reflecting a diverse base of subspecialist physicians, researchers, hospitalists, trainees, and allied health professionals from more than 35 countries.



## Strategic Plan Pillars and 2018 Highlights



**EXTERNAL RELATIONS & ADVOCACY:** ASPHO will be recognized as the leading voice for pediatric hematology/oncology.

- Continued collaboration with AAP-SOHO (American Academy of Pediatrics-Section on Hematology/Oncology) through joint policy review groups, integrating pediatric hematology/oncology expertise of both organizations
- Worked with the Sickle Cell Disease Coalition and the American Society of Hematology (ASH) to help pass the Sickle Cell Disease Research, Surveillance, Prevention, and Treatment Act of 2017
- As a member of the Alliance for Childhood Cancer, helped pass the Childhood Cancer Survivorship, Treatment, Access and Research (STAR) Act of 2017
- Partnered with more than 10 organizations as well as Industry Relations Council members and other sponsors to advance ASPHO's mission



**DISCOVERY:** ASPHO will foster the quest for, and application of, novel discoveries in pediatric hematology/oncology.

- Continued cosponsorship of *Pediatric Blood & Cancer* with the International Society of Paediatric Oncology
- Promoted [grant and research opportunities](#) to members

Presentation at ASPHO Conference of

**42** educational sessions

**26** platform sessions

**479** posters

# Strategic Plan Pillars and 2018 Highlights



**EDUCATION:** ASPHO will meet the comprehensive educational needs of pediatric hematology/oncology professionals, incorporating discovery.

The ASPHO Conference featured

**182** thought leaders

**26.25** CME credits offered

**1,131** attendees

**31** countries represented

Continued advancing the Education Strategy Initiative to identify and develop [new programs and products](#) for professionals working in pediatric hematology/oncology

Offered additional educational resources, including the 2017 Online Review Course, three live webinars with top specialists in the field, and bimonthly case studies



**CAREER DEVELOPMENT:** ASPHO will be recognized by the pediatric hematology/oncology community as the leading resource and support system for their continuous career advancement.

Supported opportunities for early career guidance, including the [virtual Mentoring Program](#) as well as Speed Mentoring and the Early Career Luncheon hosted at the ASPHO Conference

Promoted career development through the Clinician Educator Award, five Early Career Travel Stipend Awards, two Young Investigator Awards, and [other awards](#) presented at the ASPHO Conference

Provided Training Committee representation on the Council of Pediatric Subspecialties (CoPS) focusing on early career development; career pathways; and, most recently, workforce



**WORKFORCE:** ASPHO will identify and advocate for integrative solutions responding to changing workforce dynamics.

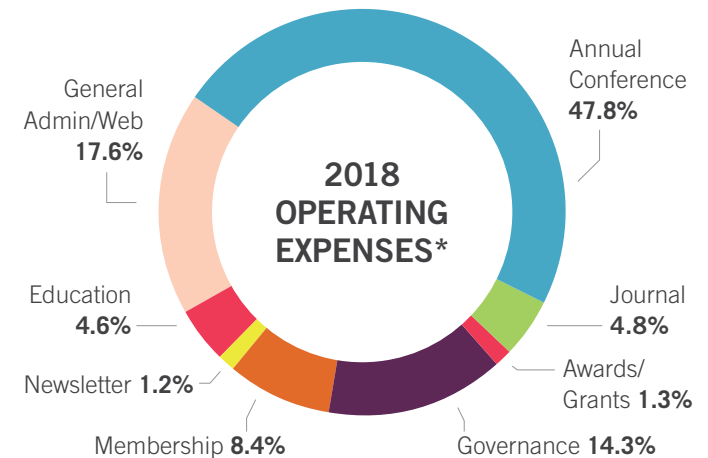
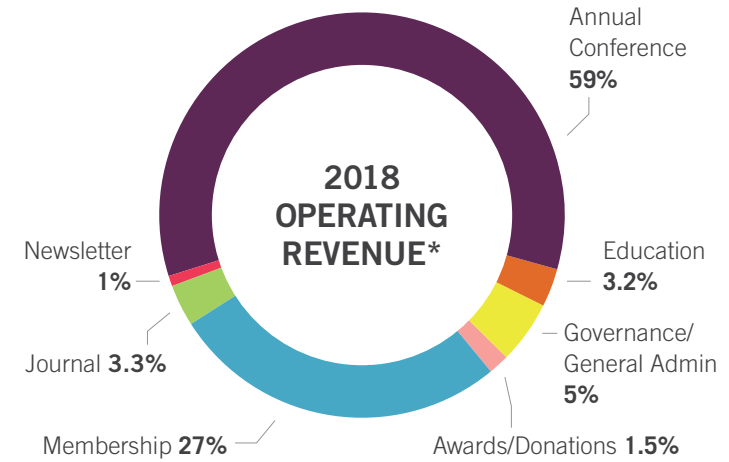
Collected data from Fellowship Program Directors to learn about graduating fellows' career paths

Began collaboration with ASH on development of a pediatric-focused Choosing Wisely list



New endeavors to create a **positive member experience** included establishing the Diversity Advisory Group, forming the Adolescent & Young Adult and Quality Improvement & Patient Safety Special Interest Groups, and launching a Twitter account and conference mobile app.

# Financials



\*Preliminary FY18 financial information

The Society's reserves of \$1,349,140 at year's end are within the recommended benchmarked range for healthcare associations and are sufficient to support 7.7 months of operating expenses.





**President**

Patrick Leavey, MD  
University of Texas Southwestern Medical Center



**Trustee-at-Large**

Leo Mascarenhas, MD  
Children's Hospital Los Angeles



**Vice President**

Jorge DiPaola, MD  
University of Colorado School of Medicine



**Trustee-at-Large**

Dana Matthews, MD  
Seattle Children's Hospital



**Immediate Past President**

Amy Billett, MD  
Dana-Farber/Boston Children's Cancer  
and Blood Disorders Center



**Trustee-at-Large**

Akiko Shimamura, MD PhD  
Boston Children's Hospital



**Secretary-Treasurer**

Caroline Hastings, MD  
Children's Hospital & Research Center Oakland



**Trustee-at-Large**

Linda Stork, MD  
Oregon Health & Science University



**Trustee-at-Large**

Doug Graham, MD PhD  
Children's Healthcare of Atlanta/Emory University



**Trustee-at-Large**

Dan Wechsler, MD PhD  
Aflac Cancer & Blood Disorders Center at Children's  
Healthcare of Atlanta and Emory University