



Important Dates and Deadlines

- October 2, 2017:** Proposals for corporate forum symposia due
- October 20, 2017:** Deadline for support opportunities to be included in the annual meeting brochure
- January 10, 2018:** Full payment due for exhibit space
- January 27, 2018:** Deadline to reserve advertising space in program guide
- February 17, 2018:** Decorator kit posted on ASPHO website
- February 21, 2018:** Advertising materials due for program guide
- February 21, 2018:** Deadline to sign up for Passport Program (for inclusion in program guide)
- March 4, 2018:** Deadline for receipt of approved materials for bag insert
- March 29, 2018:** Deadline to sign up for badges
- April 10, 2018:** Deadline for housing reservations

Housing

Blocks of rooms are being held at the Westin Convention Center Pittsburgh and Omni William Penn Hotel. Make your reservations before **March 26, 2018**, to receive the negotiated group rate of \$199 single/double. For room blocks of five or more, a 1-night, nonrefundable deposit for each reservation is required in advance to hold the reservation. There is a 3-night minimum on blocks of five or more rooms held at conference rates.

Westin Convention Center Pittsburgh
1000 Penn Avenue
Pittsburgh, PA 15222
412.281.3700
\$199 single/double

Omni William Penn Hotel
530 William Penn Place
Pittsburgh, PA 15219
412.281.7100
\$199 single/double

Industry Relations Council

Organizations that support ASPHO's mission and goals are eligible to join the ASPHO Industry Relations Council (IRC). ASPHO's enhanced IRC program features tiered levels to enable companies of all sizes to participate and includes expanded opportunities to engage with Society leadership. IRC participation offers year-round recognition and collaboration opportunities for improving patient care.

The ASPHO Industry Relations Council works to

- build positive relationships and foster dialogue
- gain greater understanding of mutual areas of interest
- advance programs that benefit patients and their families.

View our participants and learn more at www.aspho.org/support/industry-relations-council.

Advertising Opportunities

- Pocket guide
- Bag insert
- Member mailing lists
- Mobile app
- Ads in ASPHO member and attendee newsletters
- Escalator or window clings
- Freestanding meter boards

Sponsorship Opportunities

- Lanyard
- Awards reception
- Tote bags
- WiFi
- Charging stations
- Fun Run/Walk
- ASPHO attendee lounge
- Keycards

JOIN ASPHO IN PITTSBURGH AT THE David L. Lawrence Convention Center

- Increase your company's visibility.
- Connect with 1,000 physicians and allied healthcare professionals who treat children, adolescents, and young adults with cancer and blood disorders.
- Educate physicians about your company's products and services.

A member survey ranks ASPHO as the #1 source for pediatric hematology/oncology education. Members come to the meeting to learn about diagnosis, treatment of patients, and research advancements.

For more information, visit www.aspho.org.

Exhibit at ASPHO's Annual Meeting

Bridging research and treatment to advance pediatric care.



ANNUAL MEETING

Improve the care of children, adolescents, and young adults by supporting those who care for them.

Meeting Dates: May 2–5, 2018

Exhibit Dates: May 3–4, 2018

David L. Lawrence Convention Center | Pittsburgh, PA



8735 W. Higgins Road, Suite 300
Chicago, IL 60631-2738

NONPROFIT
U.S. Postage
PAID
Des Plaines, IL
Permit No. 188



JOIN US

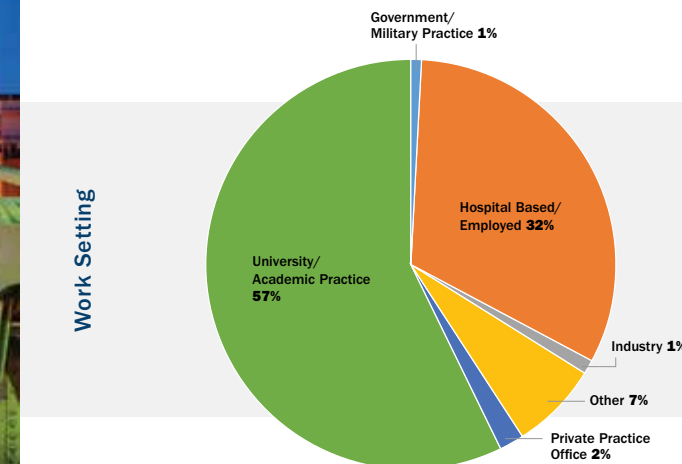
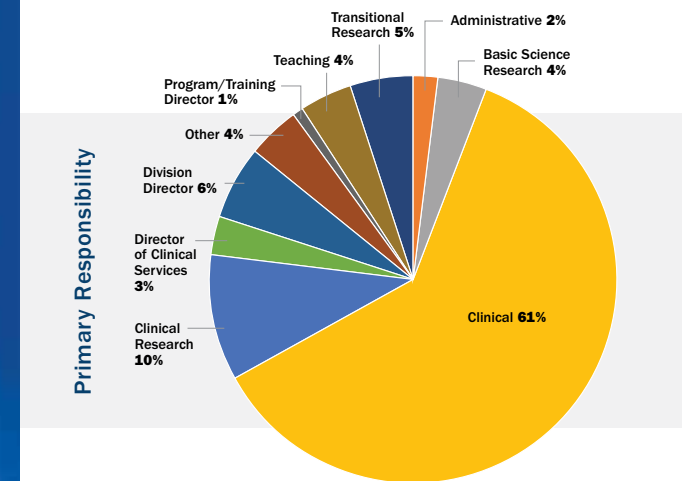
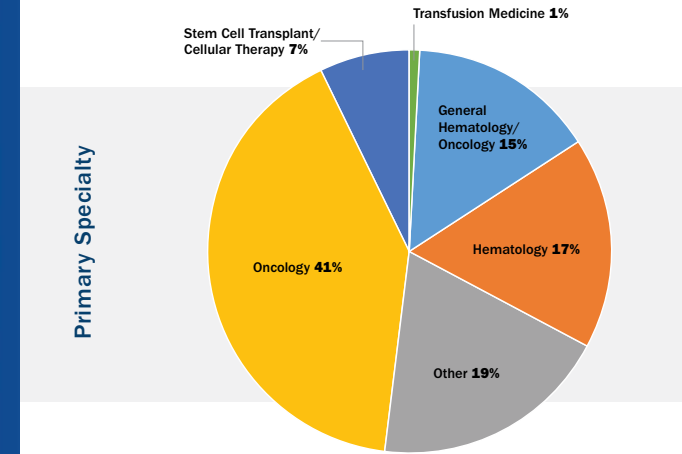
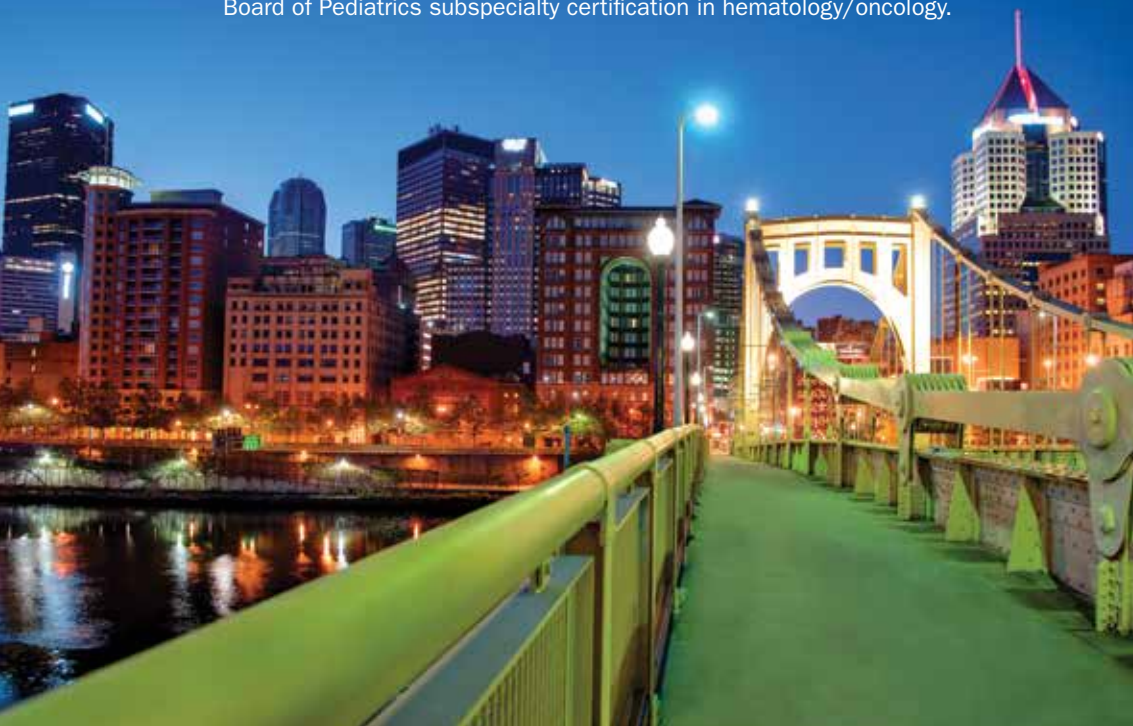
at the ASPHO Annual Meeting and Effectively Reach Your Market

About ASPHO

The American Society of Pediatric Hematology/Oncology (ASPHO) is a professional organization of more than 2,000 members. Members are physicians and allied healthcare professionals in pediatric hematology and oncology who are dedicated to advancing the knowledge, understanding, and management of blood disorders and cancer in children, adolescents, and young adults.

Through ASPHO's vibrant annual meeting and diverse professional resources, specialists share research findings, network, and keep up-to-date on the latest treatment innovations across the spectrum of diseases unique to this field.

ASPHO members treat children, adolescents, and young adults with cancer, bleeding and clotting disorders, sickle cell disease, and other hematologic abnormalities. Of its members, 89.6% hold American Board of Pediatrics subspecialty certification in hematology/oncology.



Why Exhibit?

Be seen by leaders in the field.



Connect with 1,000 pediatric hematology/oncology experts, mentors, and fellows in training.



Reach the primary market for pediatric hematology/oncology.



Advance research collaborations that lead to new developments in care.



Gain maximum visibility and exposure with unopposed exhibit hours.



Network during the opening reception, and enjoy lunch and refreshment breaks in the Exhibit Hall.

Exhibit Schedule

Thursday, May 3

8 am–5 pm Exhibit Setup and Registration
6–7:30 pm Opening Reception with Exhibits and Posters

Friday, May 4

7:30 am–3:30 pm Exhibit Hours
7:30–9 am Break in Exhibit Hall
Noon–1:30 pm Lunch in Exhibit Hall
3–3:30 pm Break in Exhibit Hall
3:30–7:30 pm Exhibitor Teardown

**Times are subject to change. Visit the ASPHO website for updates.*

Exhibit Fees

For a booth application and list of exhibitor services, please refer to www.aspho.org/support/annual-meeting-exhibits-advertising. Installation instructions are included in the booth application. Carpet is not included.

10' x 10' space (100 sq ft) \$2,500
10' x 20' space (200 sq ft) \$4,700
Not-for-profit exhibitors* \$1,700

**To qualify, please send a letter of request to Mary Paulson, manager, professional relations, at mpaulson@aspho.org.*

Expanded floor space is available in the Exhibit Hall, providing exciting opportunities to showcase products and research. By exhibiting at ASPHO's Annual Meeting, you gain access to physicians who directly influence your industry. Products and services displayed at the meeting have included

- blood services
- business and practice management services
- educational materials
- hospitals
- institutions
- insurance
- medical equipment and supplies
- pharmaceutical products
- publications
- recruitment
- software
- support services
- therapeutic products.

Commercial Support

Supporter levels include diamond, gold, silver, and bronze.

Benefits	Bronze (\$5,000)	Silver (\$10,000)	Gold (\$15,000)	Diamond (\$25,000)
Full-page recognition ad in program guide or mobile app				X
Quantities of annual meeting brochure to showcase your support				X
Passport Program			X	X
Your logo in ASPHO publications			X	X
Support display for your exhibit		X	X	X
Ad on ASPHO website or in e-newsletter		X	X	X
Sign at the supported event	X	X	X	X
Recognition in the annual meeting brochure	X	X	X	X
Recognition in the program guide	X	X	X	X
Recognition on the ASPHO website	X	X	X	X
Support graphic with exhibitor listing	X	X	X	X
Support ribbon for your representatives	X	X	X	X
Registration list (names and addresses of ASPHO attendees)	X	X	X	X

Non-CE Symposia and CE Symposia

Non-CE symposia supporters can develop and provide a 90-minute promotional or educational program in accordance with their own guidelines. These activities do not compete with CE programs, affording you an opportunity to present your product as a workshop or host a special activity to present branded or nonbranded information to attendees.

For information on sponsorship and symposia opportunities, contact Mary Paulson at 847.375.4803 or mpaulson@aspho.org.